

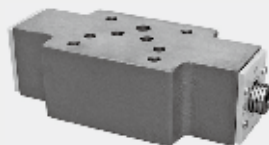


4.5

Double Throttle/ Check Valve

Type Z2FS6, 10, 16, 22...30

Sizes 6, 10, 16, 22
Up to 350 bar
Up to 360 L/min



Contents

Function and configurations	02
Symbols	02
Ordering code	03
Technical data	03
Characteristic curves	04
Unit dimensions	05-06

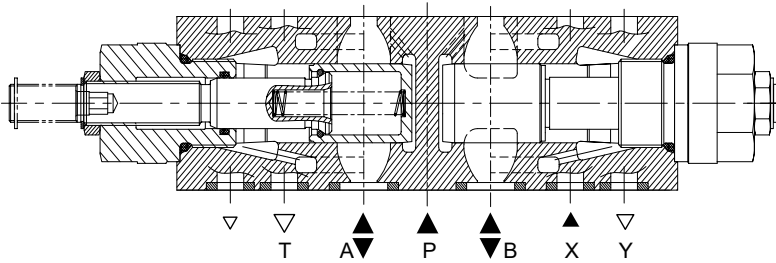
Features

- Sandwich plate valve
- Porting pattern to DIN 24 340 form A and ISO4401
- For limiting the main or control fluid flow of 2 actuator connections

Function and configuration

Valve type Z2FS is a double throttle/check valve with sandwich plate structure.

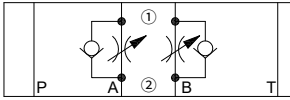
It is used to control the flow by changing the throttling. In the opposite direction, fluid flows freely through the check valve. For Z2FS10, depending on the installation position, the throttling effect may be arranged as a meter-in or a meter-out control. While for Z2FS16 and 22, depending on the model (S or S2) throttling may take place in either meter-in or meter-out, and at the same time the two operating oil chambers are connected.



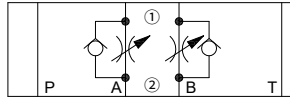
Structure chart of double throttle/Check Valve

Symbols

Size 6:

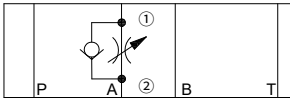


Type:Z2FS6-30/ (meter-in control)

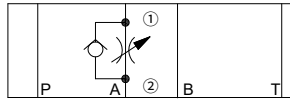


Type:Z2FS6-30/ (meter-out control)

Size 10:

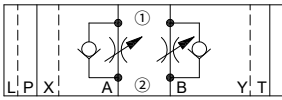


Type:Z2FS10-30/ (meter-in control)

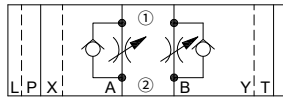


Type:Z2FS10-30/ (meter-out control)

Size 16, 22:



Type:Z2FS...-30/ (meter-in control)



Type:Z2FS...-30/ (meter-out control)

- ① =valve side
- ② = sub-plate side

Ordering code

Z2FS		30		*	
Double throttle/ check valve				Further details in clear text	
Nominal size 6	=6			No code =	NBR seals
Nominal size 10	=10			V =	FKM seals
Nominal size 16	=16			No code =	Meter-in /meter-out control
Nominal size 22	=22			S =	Meter-in contro
L30 Series	=30			S2 =	Meter-out control
				Note: overturning the Z2FS10 by 180° the throttling effect can be arranged as a meter-in or meter-out control.	

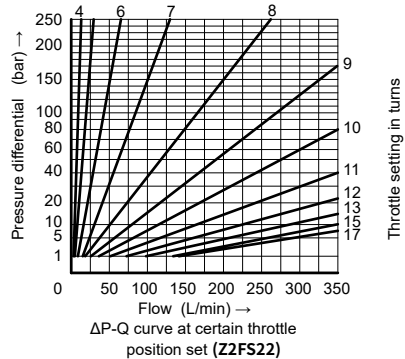
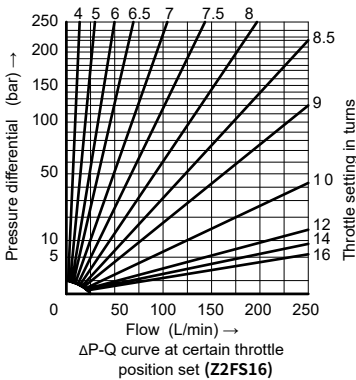
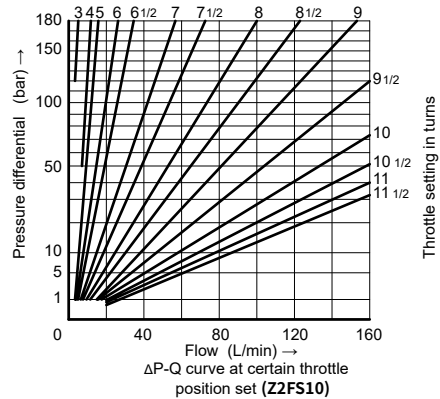
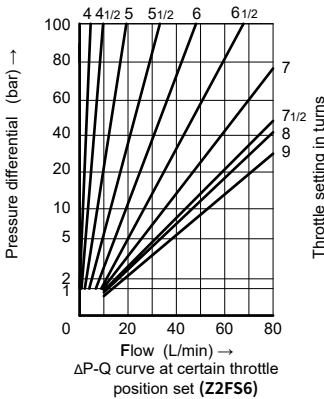
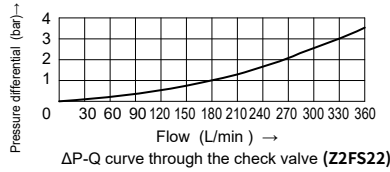
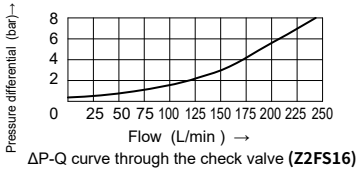
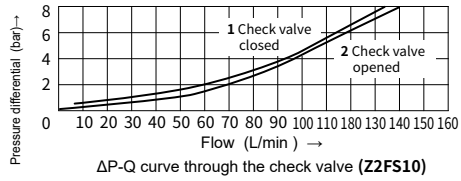
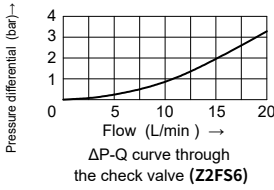
04

Technical data

Installation position	Optional				
Flow direction	One direction throttle, return through the check valve by another direction				
Fluid	Mineral oil suitable for NBR and FKM seal, Phosphate ester for FKM seal				
Fluid temperature range	°C	-20 to +80			
Degree of contamination	Maximum permissible degree of fluid contamination: Class 9. NAS 1638 or 20/18/15, ISO4406				
Viscosity range	mm ² /s	10 to 800			
Max.operating pressure	bar	to 350			
Nominal size		6	10	16	22
Weight	kg	0.9	3.1	4.7	8

Characteristic curves

(Measured at $\vartheta_{oil}=40^{\circ}\text{C} \pm 5^{\circ}\text{C}$, using HLP46)

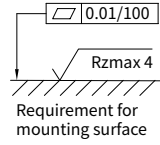
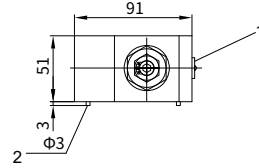
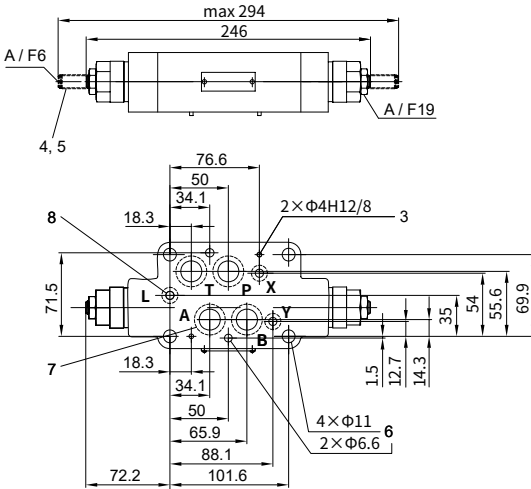


04

Unit dimensions:

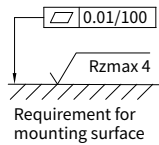
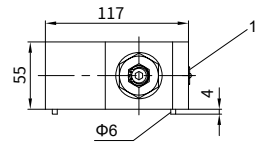
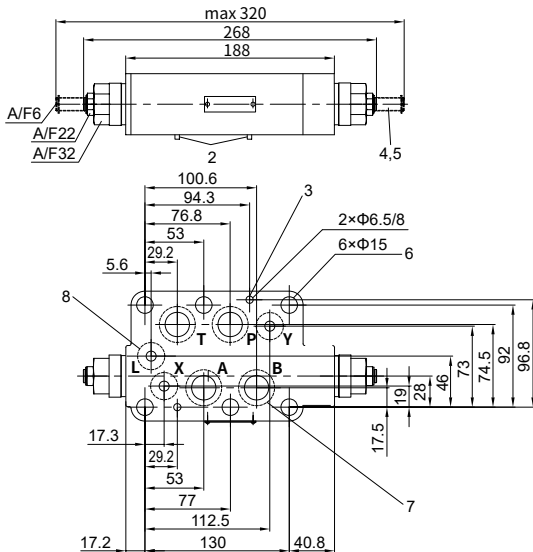
(Dimensions in mm)

• **Outline dimension of double throttle/Check Valve Type Z2FS16**



- 1 Nameplate
- 2 Locating pins
- 3 Two locating pin holes
- 4 Adjustable bolt used for adjusting throttle area
- 5 Turn anti-clockwise = increases flow, turn clockwise = decreases flow
- 6 6 through holes for valve connection
- 7 Identical seal rings for ports A, B, P and T
- 8 Identical seal rings for ports X, Y and L

• **Outline dimension of double throttle/Check Valve Type Z2FS22**



- 1 Nameplate
- 2 Locating pins
- 3 2 locating pin holes
- 4 Adjustable bolt used for adjusting throttle area
- 5 Turn anti-clockwise = increases flow, turn clockwise = decreases flow
- 6 6 holes for valve connection
- 7 Identical seal rings for ports A, B, P and T
- 8 Identical seal rings for ports X, Y and L